

## Drop Floor Slide-Out Rail Bearing Replacement

RE: Slide-Out settling due to “Rail Bearing Failure”.

Step 1. Extend slide room. Support slide room at front or rear at out board side of room depending on which rail assembly is to be repaired. This is to remove weight from rail assembly.

Step 2. Measure and record outer tube assembly mounting nut locations as they will need to be returned to their original positions later.

Step 3. Remove ¼” bolts from front and rear gussets. Remove front gusset and bend rear gusset toward center of coach to clear mount bracket on tube assembly.

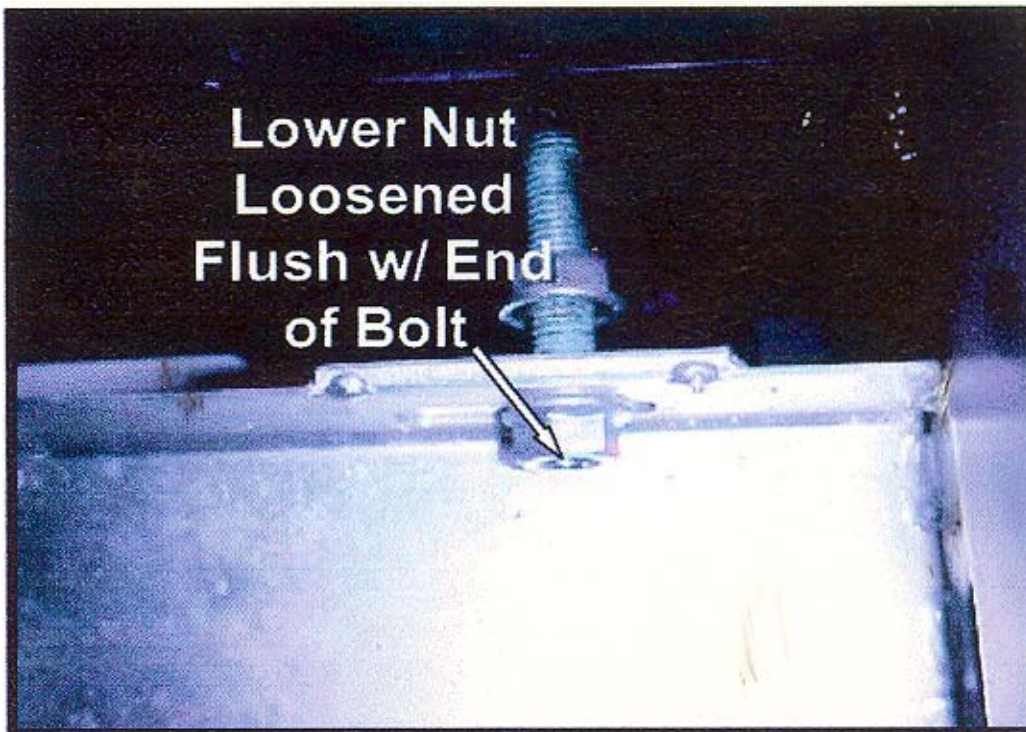
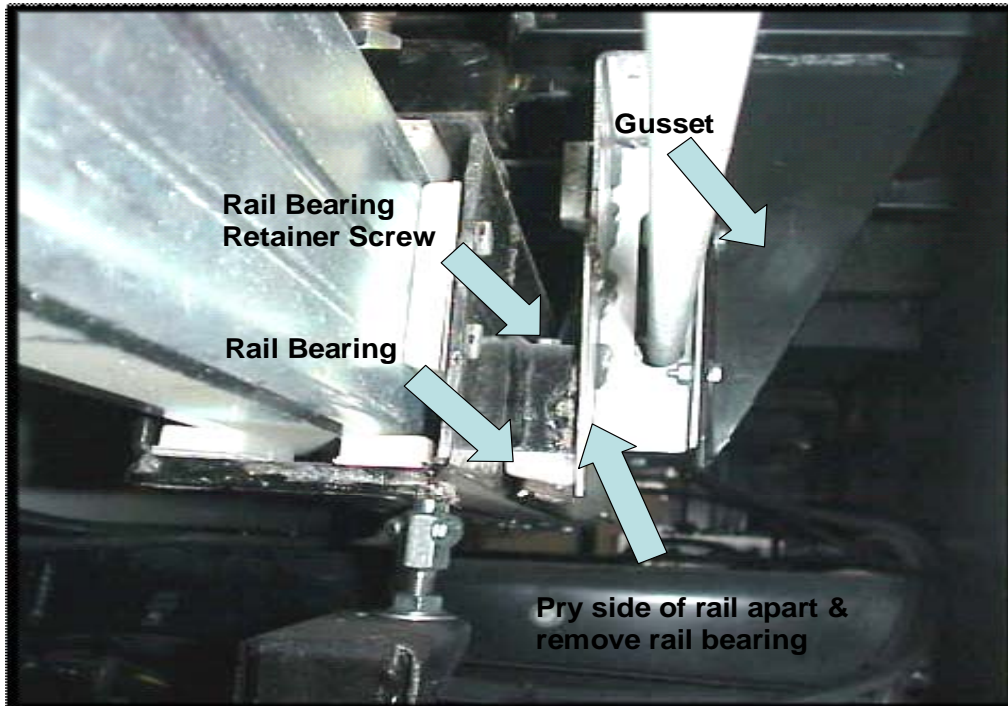
Step 4. Loosen rail assembly outer lower mounting nuts flush with threads. Next turn top mounting nuts to push rail assembly down as this will increase clearance between rail bearings and rail.

Step 5. Remove rail bearing retainer screws and shims. Next pry sides of rail apart (one at a time) to allow access to rail bearings. Remove rail bearings and shims. Next install new rail bearings using shims and screws removed on disassembly.

Step 6. Relocate rail outer mounting nuts to original marked locations as recorded in step 2.

Step 7. Reinstall gussets and shims gussets as outlined in HWH Service Bulletin.

## RE: Ram Assembly





(On I-80, Exit 267 South) 2096 Moscow Road, Moscow, Iowa 52750  
Phone: (800)321-3494 or (563)724-3396 Fax: (563)724-3408 Internet: www.hwhcorp.com

## PRODUCT/SERVICE BULLETIN

ISSUE DATE: August 19, 2004

TO: Sales and Service Personal

FROM: HWH CORPORATION

RE: 2004 Winnebago Level Out installation gusset adjustments

The following bulletin is intended to address gusset adjustments on 2004 model years of Winnebago Motor Homes.

**EXAMPLE:** The right side gusset is not perpendicular to the left. When installed the rail assemblies conform to the gussets leaving an irregular distance from top to bottom of the right and left hand rail assemblies.

**NOTE:** The drawing represents a typical Level Out mechanism. Differences in rail assembly and mounting gusset appearance are irrelevant.  
(Some parts omitted for clarity.)

1. Measure across the front of the assembly approximately 1" down as shown in the example below. DIMENSION (A). Subtract 0.150" for material thickness. DIMENSION (AA)

2. Measure across the front of the assembly approximately 1" up as shown in the example below. No subtraction is needed. DIMENSION (B)

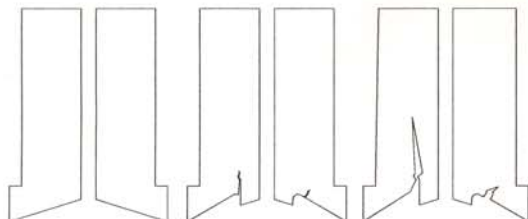
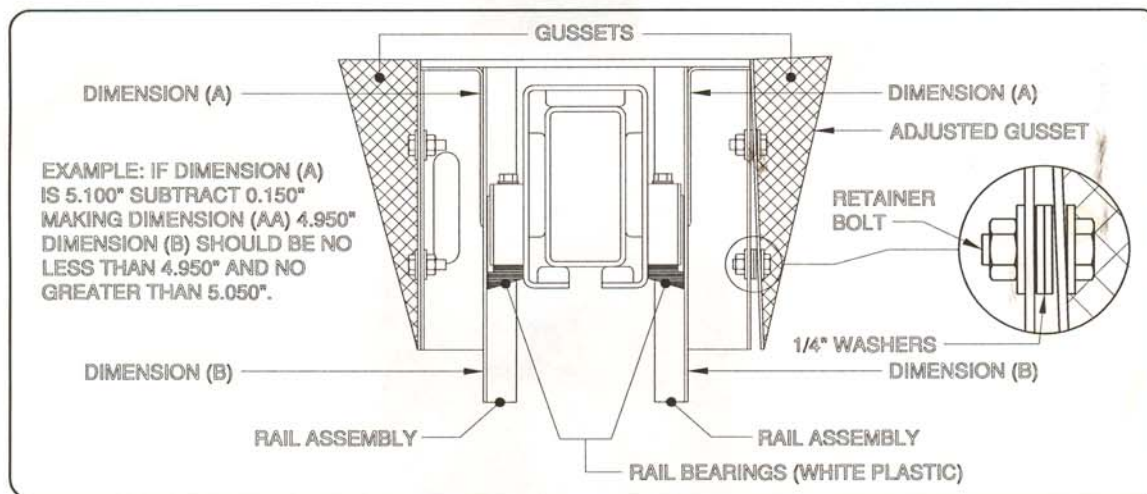
3. If dimension (B) is wider than dimension (AA) by 0.100" or greater, adjustments are needed. If either gusset needs to be adjusted, refer to the RAIL BEARING drawings below to determine if one or both rail bearings should be replaced. Contact HWH Corporation if rail bearings need to be replaced. If the rail bearings are OK proceed with adjustments.

4. Remove the retainer bolts from both sides.

5. Squeeze the bottom of the rail assemblies until dimension (B) is equal to dimension (AA). Insert 1/4" washers between the gusset and the rail assembly until dimension (B) is equal to dimension (AA) or at least no wider than dimension (AA) by 0.100".

6. Replace and tighten retainer bolts.

**EXAMPLE (Both gussets may need to be adjusted)**



DO NOT  
REPLACE

DO NOT  
REPLACE

REPLACE

Minor cracking and wear may be expected as the material settles. The Rail Bearing material and design will allow for minimal cracking and wear. However, excessive wear, large, long or multiple cracks may be indications that adjustments are needed. If adjustments are needed the Rail Bearings may need to be replaced.

MI95.53  
24AUG04