

Dual Battery Wiring Instructions

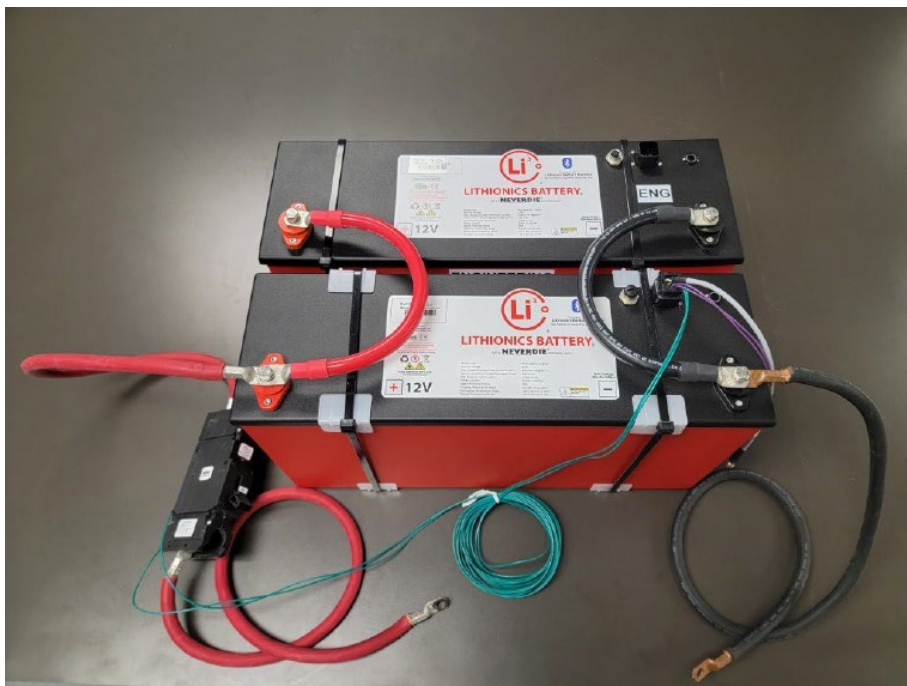
Parts List

WGO Part#	Description	Qty	Notes
275456	12V 320Ah Battery	1	
279807	14" Red 2/0 Cable	1	
279808	14" Black 2/0 Cable	1	
275608	8 Pin Harness	1	Battery ON/OFF Switch

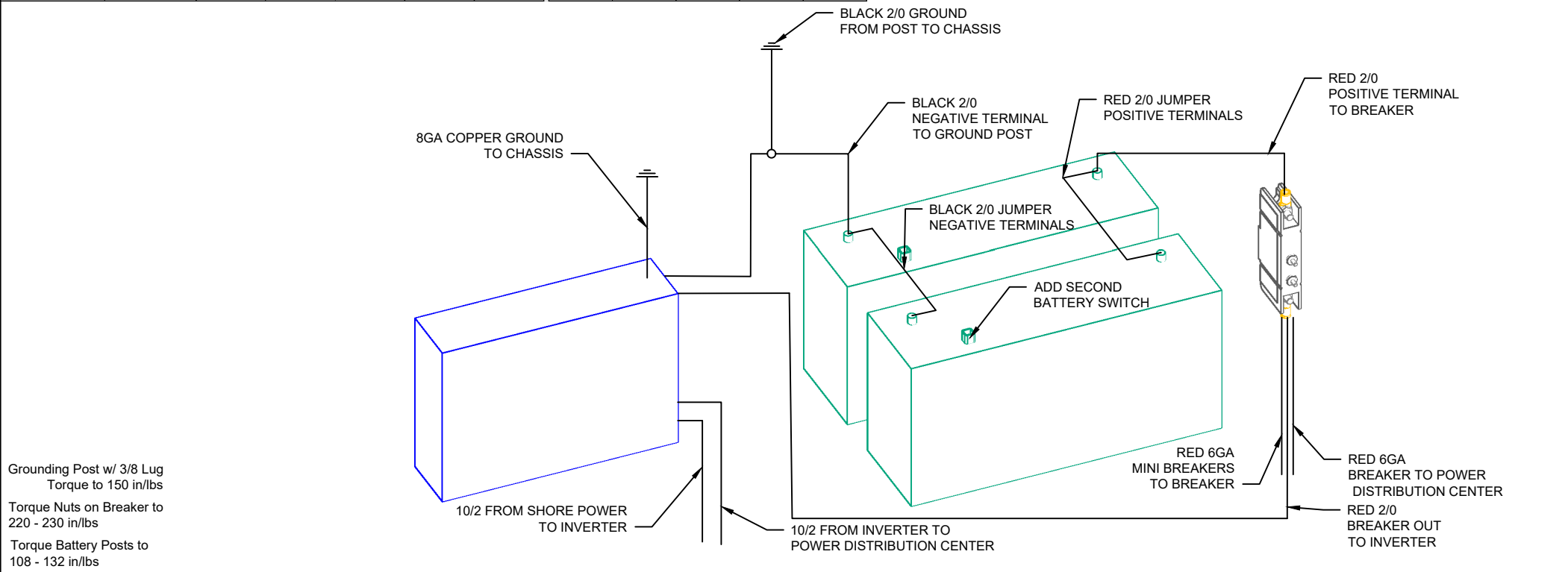
Instructions

1. Ensure that no power is running through the unit by disconnecting shore power, turning off the battery, disconnect 7way, removing fuse from solar charge controller.
2. Remove circuit breaker and mounting plate from the battery cover then set aside.
3. Remove battery ON/OFF switch from battery cover then set aside.
4. Remove current battery cover screws and take out of unit.
5. Remove cleats holding battery in place and remove the screw from the lower battery strap.
6. Remove battery post bolts and set aside.
7. Place new battery directly against current battery.
8. Use the 14" 2/0 cables to connect the batteries together in parallel, using the black cables to connect on the negative side and red cables to connect to the positive side.
9. Connect the 8-pin harness to the new battery and run along the same wires as the current battery to the breaker and ON/OFF switch.
10. Reinstall cleats and battery strap to hold the 2 batteries into place.

Example



8GA COPPER		FLX2100BH	FLX2108DS	FLX2108FBS	FLX2108TB	FLX2306BHS	H-1316DB	H-1316FB	H-1316MB	H-1316SB	H-1316TB
LENGTH	RING TERM. DIA.	MICRO MINI SERIES					HIKE 100 FLX SERIES				
46"	N/A	1	1	1	1	1	1	1	1	1	1
2/0 RED WIRE											
LENGTH	RING TERM. DIA.										
30"	2 @ 3/8	2	1	1	1	1	1	1	1	1	1
50"	2 @ 3/8		1	1	1	1	1	1	1	1	1
2/0 BLACK WIRE											
LENGTH	RING TERM. DIA.										
24"	2 @ 3/8	2	2	2	2	2	2	2	2	2	2
2/0 BLACK WIRE											
LENGTH	RING TERM. DIA.										
56"	1 @ 3/8 1 @ 5/16	1	1	1	1	1	1	1	1	1	1
2/0 BLACK JUMPER											
LENGTH	RING TERM. DIA.										
14"	2 @ 3/8	1	1	1	1	1	1	1	1	1	1
2/0 RED JUMPER											
LENGTH	RING TERM. DIA.										
14"	2 @ 3/8	1	1	1	1	1	1	1	1	1	1
Total		8	8	8	8	8	8	8	8	8	8



Grounding Post w/ 3/8 Lug
Torque to 150 in/lbs

Torque Nuts on Breaker to
220 - 230 in/lbs

Torque Battery Posts to
108 - 132 in/lbs

REV.	Description	Date	BY
A	Released for Production	10/4/21	MDB
X	X	X	X
X	X	X	X
X	X	X	X
X	X	X	X
X	X	X	X

201 14th ST. Middlebury IN 46540

Winnebago of Indiana LLC, claims exclusive rights to the information documented hereon. Neither this drawing nor any production thereof may be used to manufacture anything shown without permission in writing from Winnebago of Indiana LLC.

Description	FLX Electrical – Dual Battery		
DWG file	22-17-131-0	Used on:	MM Flx H 100 Flx
Reference File	X	X	X
	X	X	X
	X	X	X
DATE	12/1/22	Drawn by	MDB
		SHEET 1 OF 1	REV A