



TIP SHEET

Upgrade Procedure for Room Locks 907100111& 907100112

© Copyright Power Gear Issued: January 2012

2/12 #82-S0519, Rev. 0C

! WARNING

Room lock must be retracted before starting this operation.

! NOTE

If you have Room Lock LH Assembly 907100111, order kit #1010002312.

If you have Room Lock RH Assembly 907100112, order kit #1010002315.

Warranty Time

Diagnostic and Repair = .5 Hour Total

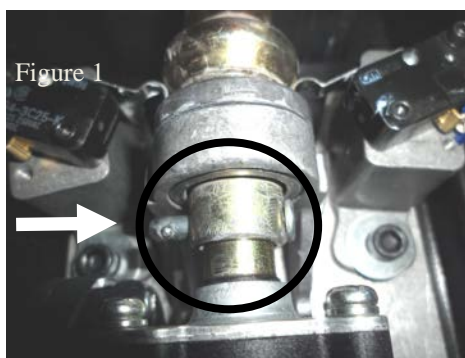
1217 E. 7th St.
Mishawaka, IN 46544
www.powergearus.com



Due to potential variation in the motor performance, some room locks may become "jammed" when the room lock is fully retracted, and will not extend. This upgrade uses a Belleville washer and replacement motor to correct the problem.

Instructions

- 1) It will be necessary to gain access to the lock assembly motor.
- 2) Disconnect power from motor.
- 3) Remove clevis pin from end of drive screw (Figure 1).



- 4) Remove hair pin from end of clevis pin (Figure 2) and remove clevis pin from motor mount casting.
- 5) Remove motor and set aside.
- 6) Position shaft so Acme screw can be removed (Figure 3). The step bearing may come out with the drive nut/Acme screw assembly. Remove and place back in the motor bracket casting.
- 7) Remove the acme screw from the drive nut. (Figure 4) Remove thrust washer and set aside.

Figure 3

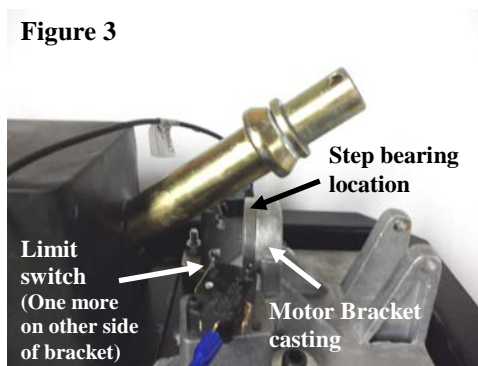
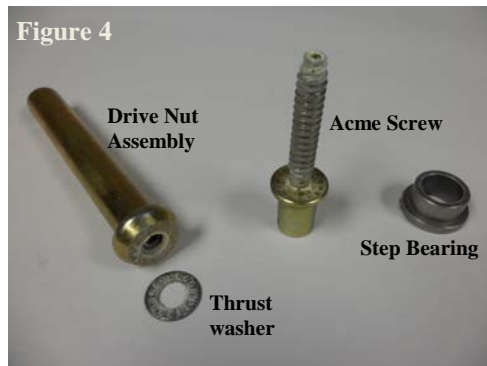


Figure 4





Motor #1820130



Motor #1820131



- 10) Lubricate both sides of Belleville washer (Part #2010000474) with Sta-Lube Multipurpose Super White Grease SL3151 (or equivalent), and install with curve toward flange of the acme screw (Figure 5, 6, and 7).

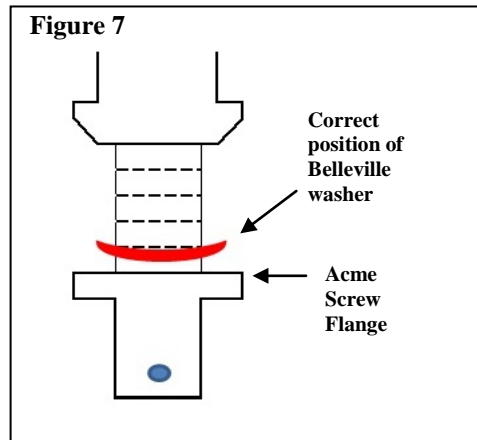
Figure 5



Figure 6



Figure 7



- 11) Reverse steps 2 thru 9 to re-assemble the room lock. **Make sure to use the new replacement motor during assembly.**
 For Left Hand Room Lock #907100111, use motor #1820131 (It will have "R" stamped into metal housing. See picture to the left).
NOTE: The motor "hand" position is opposite the assembly "hand" position.
 For Right Hand Room Lock #907100112, use motor #1820130 (It will have "L" stamped into metal housing. See picture to the left).
NOTE: The motor "hand" position is opposite the assembly "hand" position.
- 12) Verify operation of assembly by extending & retracting lock assembly several times.
- 13) Test slide out room to make sure it moves out and in. If the room does not operate, check and adjust the two limit switches on the room lock.
- 14) Re-install access panels as required.