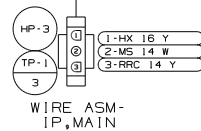
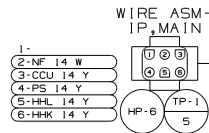


REV	ZONE	REVISION RECORD	DATE	QTR	NO
B	---	ADD CIRCUITS HLM	12/21/09	3708	7404
C	---	DELETE ROPE LIGHT SWITCH AND CIRCUIT JF	04-08-10	0517	7404
D	---	CHANGE MAP LIGHT CIRCUITS	04-22-10	7404	



PASSENGER'S
MAP LIGHT



WIRE ASM-
CLEARANCE
LAMPS



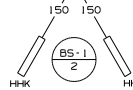
NF (15-21)



ROPE LAMP



SUNVISOR



DRIVER'S
MAP LIGHT



5 COVER WITH MINIMUM POSSIBLE DIAMETER CONDUIT 41953-01, -02, -03, -06, -07, -08, -15-000 AS REQUIRED. SECURE BOTH ENDS WITH TAPE 8363-01-000 TO WIRE ASM.

4. ALL WIRES W/O TERMINALS TO BE STRIPPED 10MM UNLESS OTHERWISE SPECIFIED.

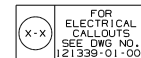
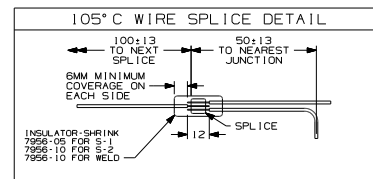
3. DIMENSIONS SHOWN SHALL BE CONSIDERED AS BETWEEN CENTERS OF JUNCTIONS OR BRANCHES. DIMENSIONS SHOWN BETWEEN JUNCTIONS AND CONNECTIONS OR TERMINALS ARE TO END OF WIRE.

2. WIRE ASSEMBLY TO BE SECURED BY WRAP OF TAPE 610 MAX APART AND AT EACH JUNCTION OR BRANCH USING 7957-01-000 TAPE.

1 TOLERANCES TO BE AS FOLLOWS UNLESS OTHERWISE SPECIFIED:

- TOLERANCE OF CUT WIRE LENGTHS SHALL BE $\pm 13, -0$ OR $\pm 1\%, -0\%$ WHICHEVER IS LARGER.
- TOLERANCE BETWEEN JUNCTIONS OR BRANCHES SHALL BE $\pm 13, -0$. SHALL NOT BE CUMULATIVE.

NOTES:



WINNEBAGO INDUSTRIES, INC.		COPYRIGHT 2010 WINNEBAGO INDUSTRIES, INC.	
QTR	J. DOKKEN	DATE	11/23/09
CHG	ELECTRICAL GROUP	ALL DIMENSIONS ARE IN MILLIMETERS	
P.E.	ELECTRICAL GROUP	FIRST USED	
W.E.	A. GEISLER	11 H-SER	
QTR	J. LINDEMANN	MATERIAL	
UNSPECIFIED TOLERANCES ARE:		1 ONE-PLACE (12, 13) TWO-PLACE (12, 13) ANGLE	
THIRD ANGLE PROJECTION		DO NOT SCALE DRAWING TITLE: WIRE ASM-OVHD, FRT SHEET 1 OF 1 PART NO 175759 REV D	