

HWH SPACEMAKER SLIDE-OUT MECHANISM

“LEVEL-OUT” MECHANISM *with*

DUAL-CYLINDER | SYNCHRONIZING CYLINDER

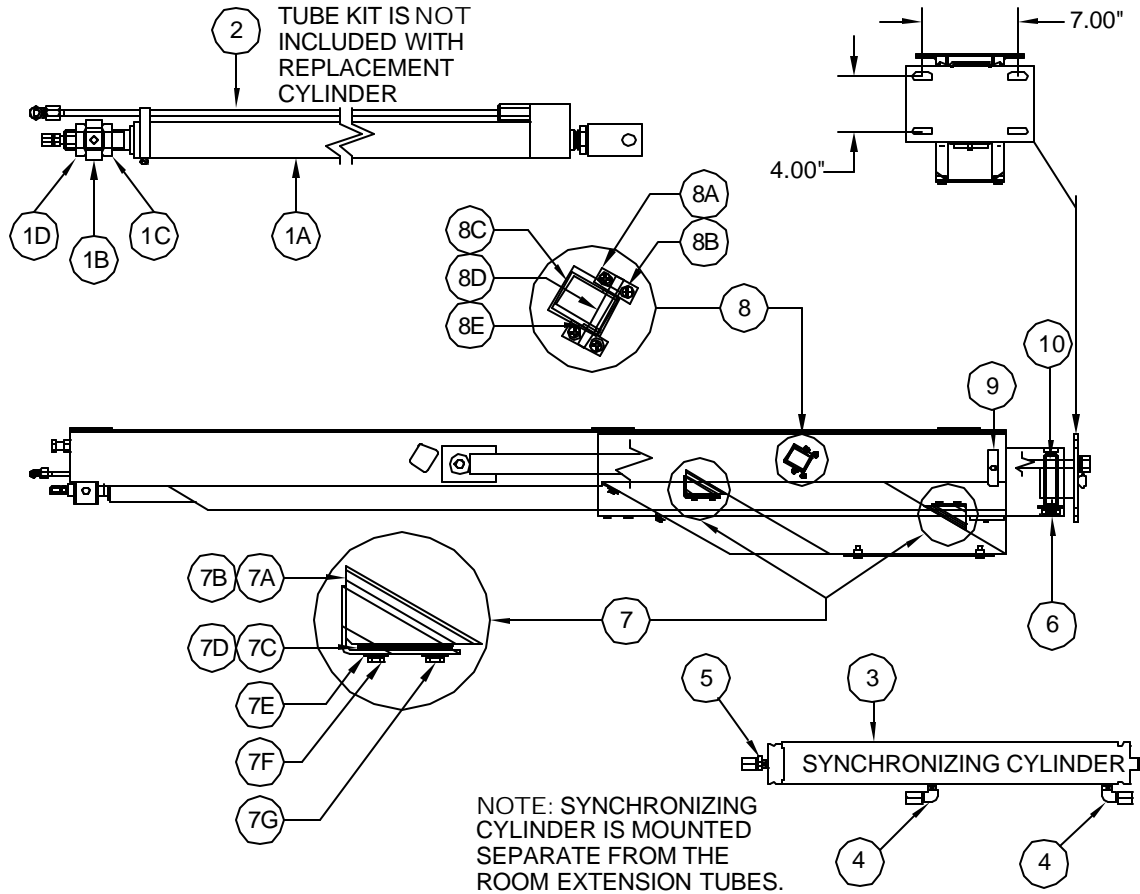
(File: MR41.2200.DOC | Revised: 18MAY17)

> [PrintFriendly PDF File](#)

The diagrams below represent the **BASE MODEL SLIDE-OUT MECHANISM** as described above.

The information on this page is similar in all adaptations of the base model.

- * Slide-out parts that have been adapted to OEM specifications can be found in the **OEM-Specific Parts Guide** > [MR40.HTML](#).



ITEM	ORDER#	QTY	DESCRIPTION
1*		1	CYLINDER ASSY
1A		1	CYLINDER
1B		1	CYLINDER MTG. NUT
1C		1	DROP ADJ. NUT - INNER
1D		1	DROP ADJ. NUT- OUTER
2*		1	TUBE ASSEMBLY
3*		1	SYNCHRONIZING CYL (Includes 4 & 5.)
4	RF1453	1	1/4" ELBOW 90 DEG.
5	RF1456	1	1/4" MALE CONNECTOR
6	RAP91026	1	PIVOT BOLT KIT (Includes jam nut and lockwasher.)
7	RAP91028	1	PLASTIC SLIDE KIT
7A		2	SLIDE LEFT
7B		2	SLIDE RIGHT
7C		4	SHIM 2.75 X 0.7 X 0.075
7D		16	SHIM 2.75 X 0.7 X 0.020
7E		8	1/4" LOCKWASHER
7F		4	SCREW 1/4" - 8 X 1.25
7G		4	SCREW 1/4" - 8 X 0.75

ITEM	ORDER#	QTY	DESCRIPTION
8	RAP91027	1	CATCH KIT
8A		4	MOUNTING BRACKET
8B		8	SCREW 10-24 X 3/8"
8C		2	CATCH
8D		2	MOUNTING PIN
8E		4	SPACERS
9	RAP91975	1	BEARING PAD KIT
9A		2	#10 LOCKWASHER
9B		2	FENDER WASHER
9C		2	#10 SCREW
9D		7	BEARING PAD 2" X 2.6"
9E		2	BEARING PLATE 2" X 2.6"
9F		10	SHIM 2" X 2.6"
9G		2	BEARING PAD 2" X 0.8"
9H		4	BEARING PIN
9I		6	SHIM 0.8" X 2.6"
9J		2	BEARING PLATE 2" X 0.8"
10	RAP91357	1	MANUAL RET. SCREW 39"
	RAP93508	1	MANUAL RET. SCREW 43"

NOTE: INDENTED ITEMS INCLUDED WITH PRECEDING ITEM.