

Model type:
TVM63XNA

Commercial code:
63076

General notes

Technical Documentation guidelines

You can find herewith some generic information to simplify consulting of technical documentation:

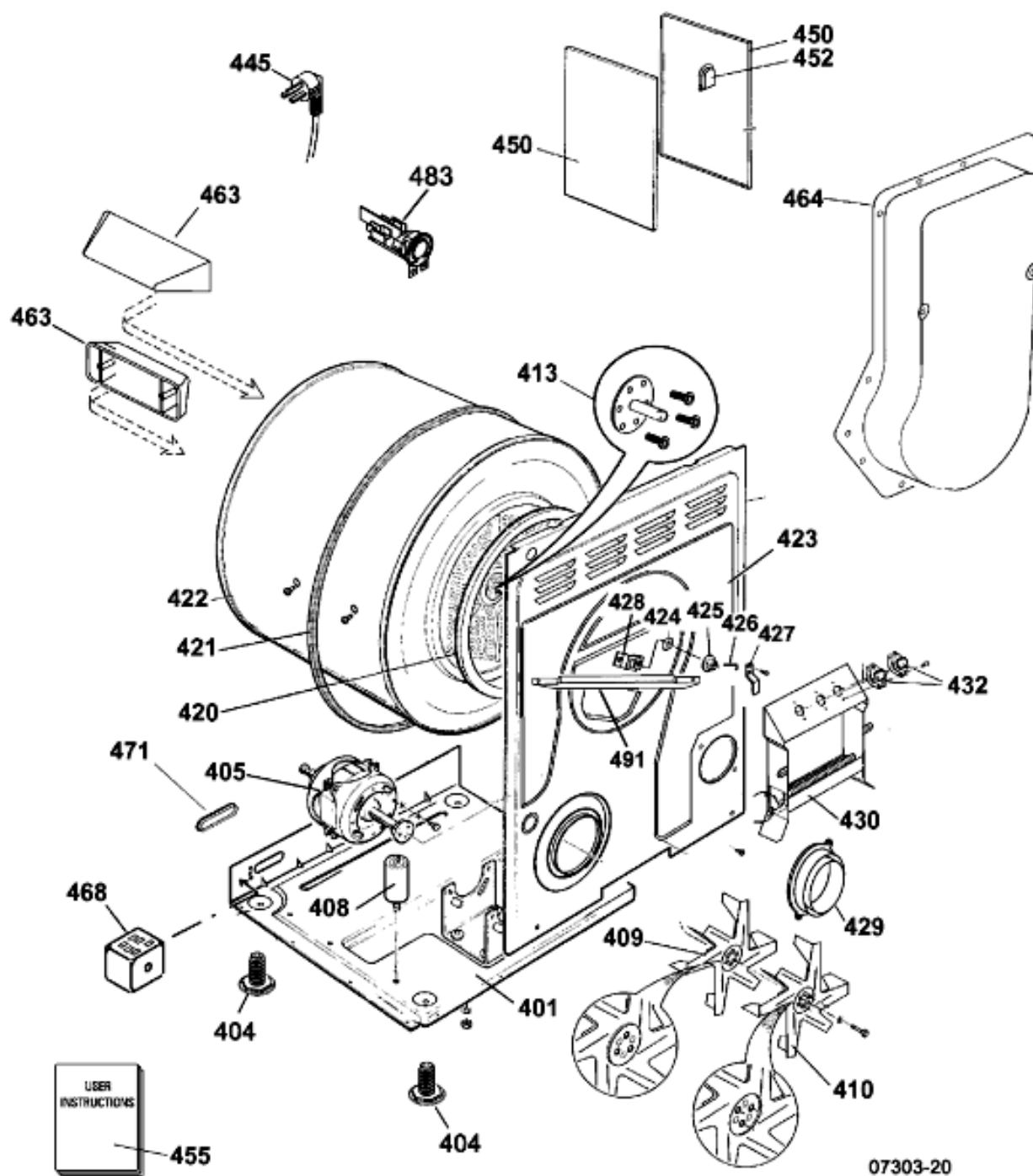
1. Models of same range share the same exploded views, which report the richest set of spare parts: generally, a model does not necessarily have a related spare part for each particular shown on exploded views.
2. Some spare parts can not be represented directly on the exploded views (instruction booklets, specific kit, etc...). You can find those codes in the spare parts list with the same reference of particular where spares are installed or with references 099, 999. Instruction booklets, once managed, appear with 000 reference.
3. On the higher right site of each exploded view there is a serial number which indicates the beginning of the production of certain range: some models might have more than an exploded view for a given category, each distinguished by a different serial no. and linked to another spare parts list. In this case, serial no. is required to supply the right spare part code. Exploded view to be considered is the one with a more recent serial no. but previous than the one of the model that needs assistance.
4. Exploded views might require further updates even after publishing. Addition of new spares will go on following the already existing numeration references. Revision number of an exploded view is shown into last four digits of serial number into upper right hand corner.
5. The spare parts list associated to an exploded view shows related codes of spares managed for a certain model; for each spare part other informations are available:

REF: reference no of spare into a table; SUBSTITUTE: list of spare(s) which can replace a code but that keeps same functional characteristics

INDUSTRIAL CODE: list of variables of a model (shown into model label) where such spare is used; NOTICE: code of information(s) to refer to complete technical intervention, track for changes or to find correct spare part code.
6. Some notices, into a same section are generic therefore cannot be directly linked to a spare part. In order to assist a model in the best way as possible, it is helpful to pay attention to all notices and constantly verify documentation updates
7. Technical documentation cover shows model name and its commercial codes

07303-20

Exploded views



07303-20

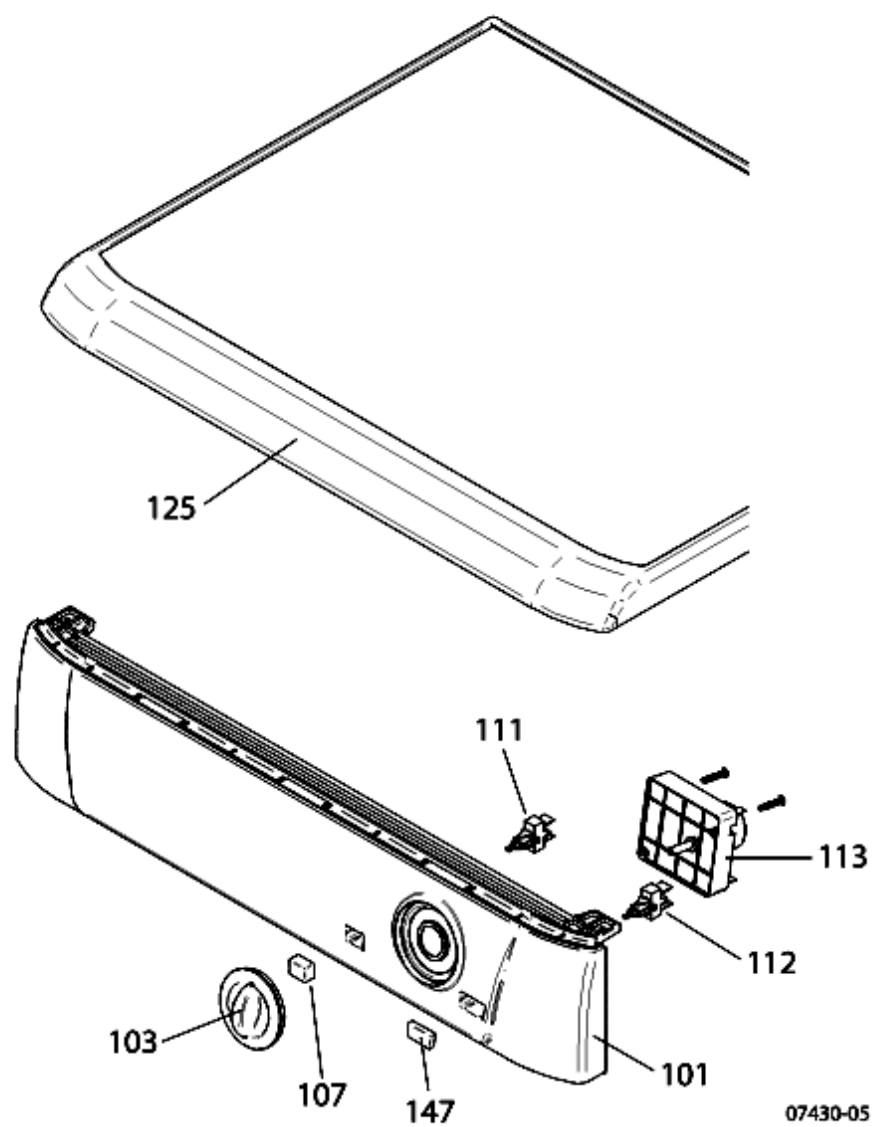
07303-20

Spare parts list

Ref.	Code	From	To S/N	Substitute	Description	Notice	Industrial
401	C00142621				base panel ul		
401	C00252668				bracket		
404	C00142775				adjustable foot ul		
405	C00142623				motor 353 60hz 120v		
408	C00142624				motor capacitor 25uf ul		
409	C00112153				impeller-inner		
410	C00116327				fan-outer		
420	C00145648				rear seal 17mm		
421	C00145707				stretch belt h9 1860mm (td)		
422	C00268493				drum vent td st/ul fixed shaft		
423	C00142627				rear panel ul		
424	C00142628				drum rear bearing teardrop		
424	C00250889				screw		
425	C00142631				drum shaft collar		
426	C00095551				drive pin		
427	C00192903				this item is not fitted to this model		
428	C00192903				this item is not fitted to this model		
429	C00142632				vent hose adaptor ul		
430	C00142633				heater 1.32kw usa		
432	C00142635				thermostat kit		
445	C00142636				mains plug assembly usa ul		
450	C00112184				side panel phd white		
452	C00095553				rear bearing cover		
463	C00142638				drum lifter ul		
468	C00142639				reversing timer 120v usa		
483	C00142651				terminal block 120v		
491	C00122256				screw 6 x 3/8		
491	C00260451				brace		
999	C00142716				belt installing tool dryer gda		

07430-05

Exploded views



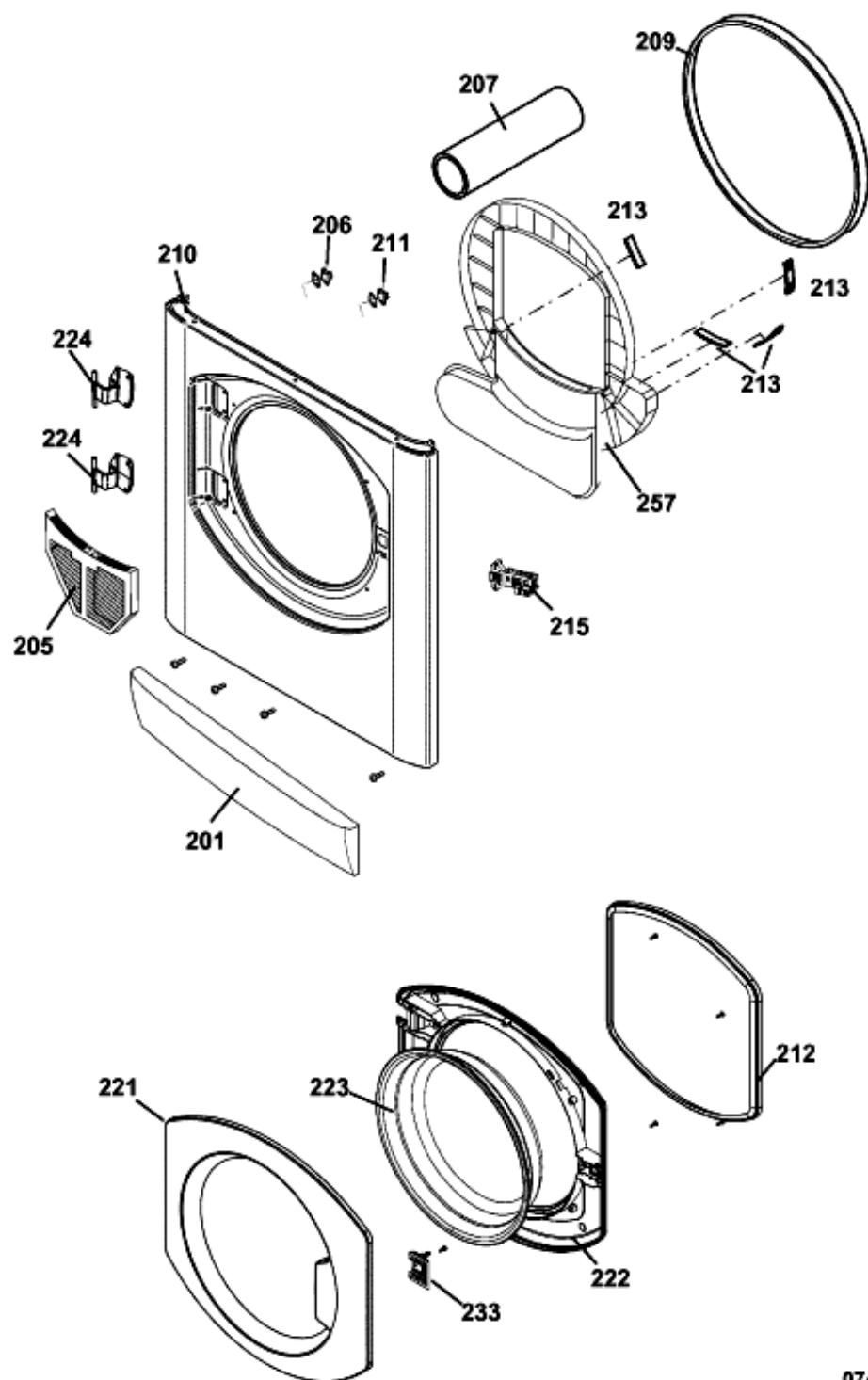
07430-05

Spare parts list

Ref.	Code	From	To S/N	Substitute	Description	Notice	Industrial
101	C00275200				console panel tvm63xna ul		
103	C00195542				compression ring		
103	C00275188				programme knob ul		
107	C00275199				button white ul		
111	C00095500				switch		
112	C00142602				start switch		
113	C00142608		00107...		timer mounting plate		
113	C00255416	00108...			timer bracket		
113	C00270858				timer crouzet 120v 60hz		
125	C00275197				worktop white ul		
147	C00275198				button white ul		

07441-15

Exploded views



07441-15

07441-15

Spare parts list

Ref.	Code	From	To S/N	Substitute	Description	Notice	Industrial
201	C00142609				kick strip white ul		
205	C00270779				filter round f/panel hb/ul		
206	C00192903				this item is not fitted to this model		
207	C00142612				vent tube ul		
209	C00142613				drum front seal		
209	C00276750				seal drum front 16mm vented	n4409k00	
210	C00252668				bracket		
210	C00261883				front panel white		
211	C00208247				eco stat 40°c		
212	C00112211				door seal		
213	C00255284				bearing pad grooved		
215	C00275218				door switch unit (td) ul		
221	C00275219				door trim - front white ul		
222	C00142617				door trim rear white ul		
223	C00112192				door bowl		
224	C00254619				hinge		
233	C00142619				door latch (td)		
257	C00270778				air duct round vent hb/ul		

Notices

n4409k00: Drum to front Air Duct Seal

With effect from 90916.0001 a new drum to front air duct seal was introduced into production on all vented tumble dryers. This seal, identified by a green stripe, is 2mm wider and can be fitted as a service replacement to all vented dryers produced after 50501.0000.