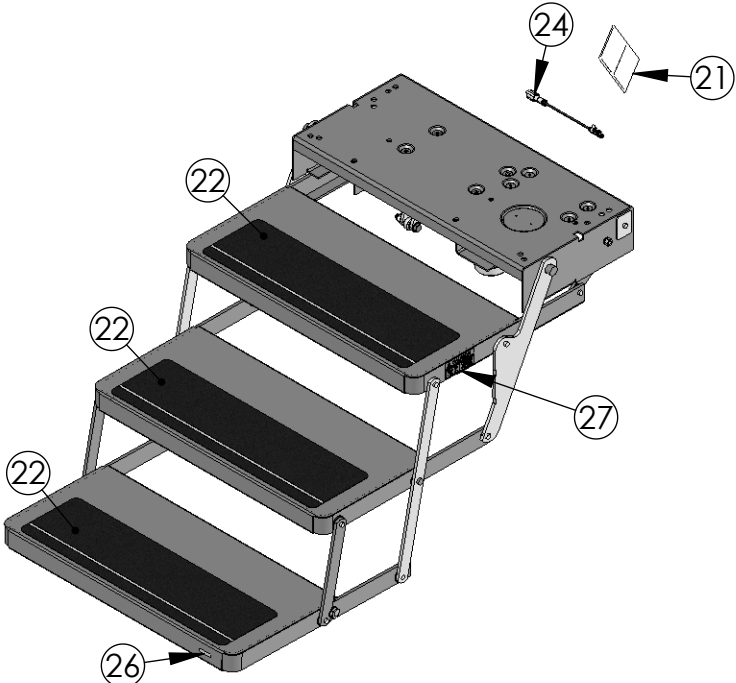
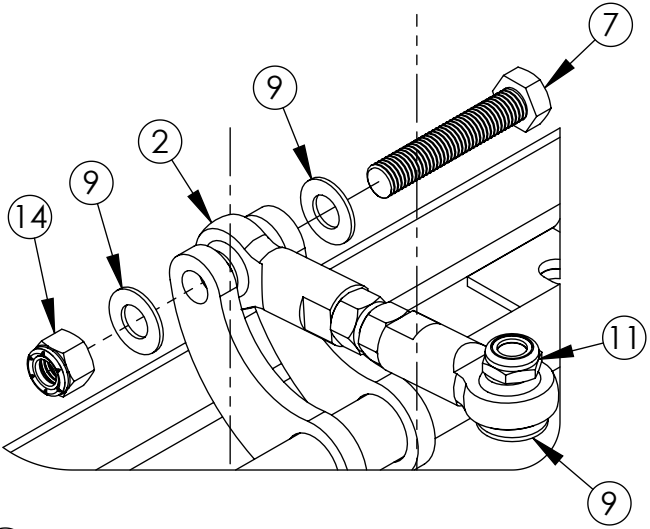
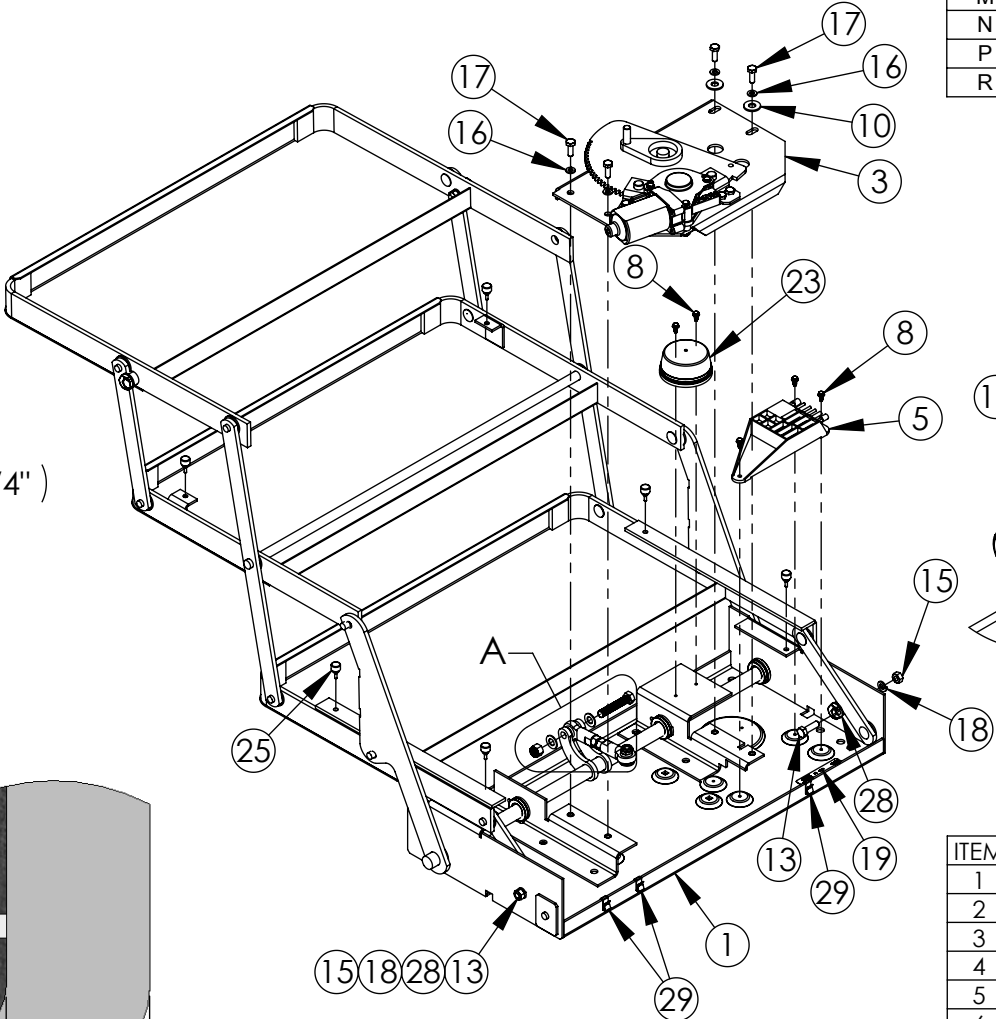
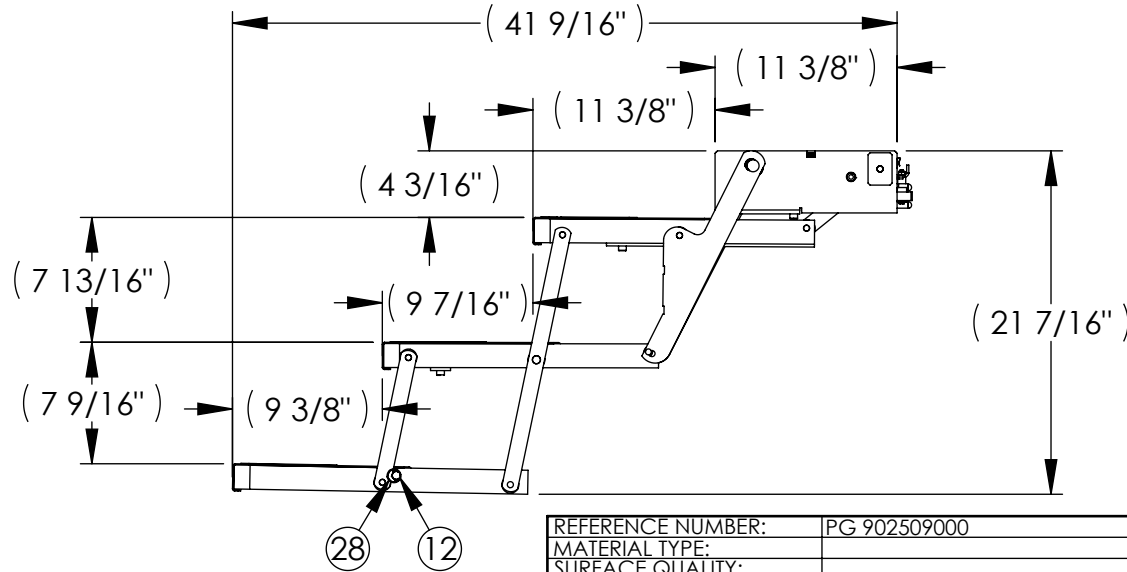
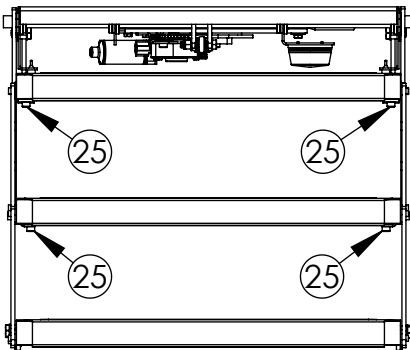
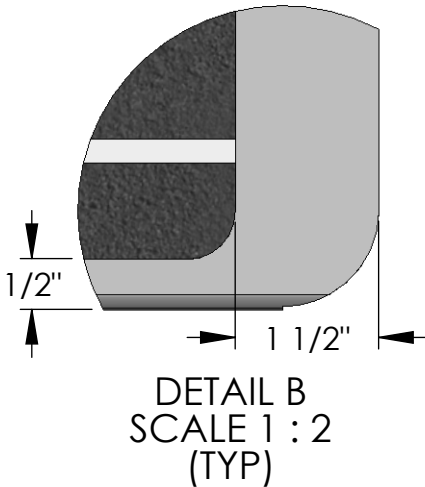
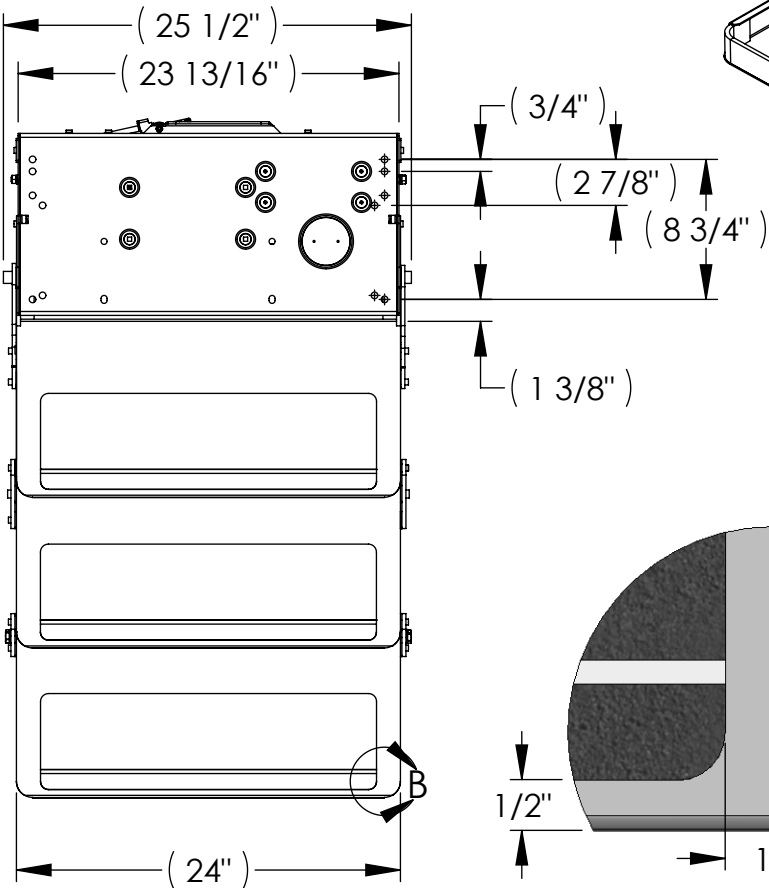


REVISION HISTORY					
REV	DATE	DESCRIPTION	ECN	DWR	APVD
M	3/24/2016	REPLACE 376157 WITH 118647	CA-0012799	KSW	MS
N	4/13/2016	REPLACE 376160 WITH 377745	CA-0014750	KSW	JC
P	9/24/2016	ADDED SECTION B-B. ADDED (1) 127549. REMOVED BALLOON (?).	CA-0044408	MTH	JL
R	1/6/2017	REMOVE (2) 375342 & (1) 127549; ADD (2) 375363; DIMS TO FRACTIONAL	CA-0059644	LDV	JL



ITEM	PART NO.	DESCRIPTION	NAME	GA	Default	1	2	3	4
1	369399	FRAME ASSY 25 PAINTED (3202050)	STEP		1	1	1	1	1
2	369488	LINK ASSEMBLY 24/25 ELECTRIC STEPS (3380050)	SUB ASSY		1	1	1	1	-
3	369529	MOTOR TABLE 24/25 AM EQUIPMENT 214 3392152	SUB ASSY		1	1	1	1	-
4	369311	1 SWITCH PACK W/ POWER SWITCH N/O	SVCKIT		-	-	-	1	-
5	363982	CONTROLLER STEP - TRIPLE SERVICE HIGHER CURRENT LIMIT	ELEC		1	-	1	1	-
6	369243	HARNESS PIGTAIL 4-WAY MALE 12" (1809925, 909306000)	ELEC		-	-	-	1	-
7	118647	BOLT - 3/8 - 16 X 2 HEX TAP BOLT; GR5 ZINC	FASTENER		1	1	1	1	-
8	369055	SCREW - #8 - 32 X 3/8 HWH ZN HEX F ST (1201000)	FASTENER		6	-	6	6	-
9	369127	WASHER .390 X .750 X .050 NYLON (1210060)	FASTENER		3	3	3	3	-
10	374776	5/16 FLAT WASHER	FASTENER		2	2	2	2	-
11	375098	NUT - 3/8-16 NTE NYLON INSERT JAM LOCK (1206211)	FASTENER		1	1	1	1	-
12	375342	BOLT - 5/16 - 18 X 1 1/4 HHCS GR5 ZN FTNP ST (1203440)	FASTENER		2	2	2	2	2
13	375363	BOLT - 5/16 - 18 X 1 HHCS GR5 ZN FTNP ST (1203430)	FASTENER		2	2	2	2	2
14	376094	NUT - 3/8 - 16; NYLON INSERT LOCK NUT ZINC	FASTENER		1	1	1	1	-
15	376158	NUT 5/16-18 HEX (1205900)	FASTENER		4	4	4	4	4
16	376162	1/4 SPLIT LOCK WASHER (1209420)	FASTENER		4	4	4	4	-
17	376264	BOLT - 1/4 - 20 X 3/4 HEX GR5 ZN ST (1203040)	FASTENER		4	4	4	4	-
18	377745	5/16" REGULAR HELICAL SPRING LOCKWASHER (16-1003)	FASTENER		4	4	4	4	4
19	127549	LABEL - 3 X 1; (MH)	LABEL	-	1	1	1	1	1
20	369410	MANUAL, OWNER (NOT SHOWN) (1422279)	LABEL		1	1	-	1	-
21	369517	LABEL STEP WARNING (1414600)	LABEL		1	1	1	1	1
22	164958	ANTI-SKID TAPE; 21" X 6"	MOTORSTEP	-	3	3	3	3	3
23	358693	LIGHT UNDER STEP W/TERM (3410000)	PLATE		1	-	1	1	-
24	365884	PIGTAIL FOR CONTRL 9510 REV POLARIT 1800711	PURCH		1	-	1	1	-
25	366062	BUMPER BLACK RUBBER STOP (1602000)	PURCH		6	6	6	6	6
26	369155	LABEL KWIKEE LOGO (1414400)	PURCH		1	1	1	1	1
27	385411	LABEL - 300LB STEP WEIGHT RATING	PURCH		1	1	1	1	1
28	366035	CAM STOP HEX HEAD SOCKET	SMALL PARTS		4	4	4	4	4
29	358920	3/8" X 11/16" X 1/4" X 3/16" X 5/16" X 3/8"	XMSZ	26	3	3	3	3	-

TITLE:

STEP 25 TRIPLE 24" ELEC W/ 9510

UNLESS OTHERWISE SPECIFIED

1. ALL DIMENSIONS ARE IN INCHES BREAK SHARP EDGES & DEBURR

2. MATERIAL & FINISH TO BE AS NOTED OR SUBSTITUTED WITH AN APPROVED AND TESTED EQUIVALENT

FILLET R.015

FINISH 125/

THIRD ANGLE PROJECTION

TOLERANCES (EXCEPT AS NOTED)

DECIMAL .X ±.1
.XX ±.03
.XXX ±.015

FRACTIONAL ±1/16

ANGULAR ±1°

LIPPERT
COMPONENTS™

THE INFORMATION CONTAINED IN THIS DRAWING IS THE SOLE PROPERTY OF LIPPERT COMPONENTS, INC. ANY REPRODUCTION IN PART OR AS A WHOLE WITHOUT THE WRITTEN PERMISSION OF LIPPERT COMPONENTS, INC. IS PROHIBITED.

DWG. NO.

365837

SIZE

B

DATE:

1/12/2015

REV.

R

DRAWN BY

MTH

CHECKED BY

MTH

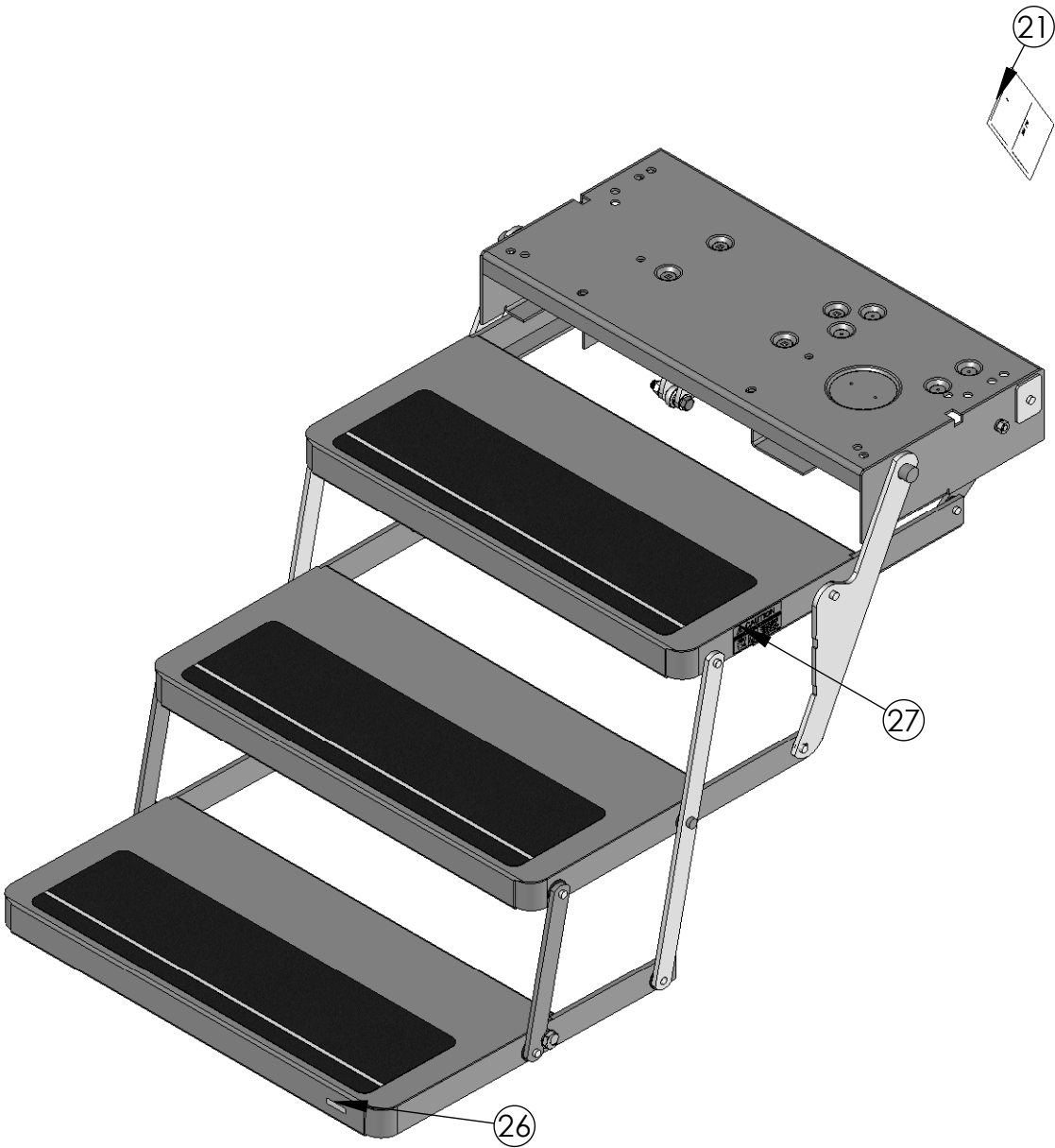
APPROVED BY

SHEET


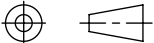
1

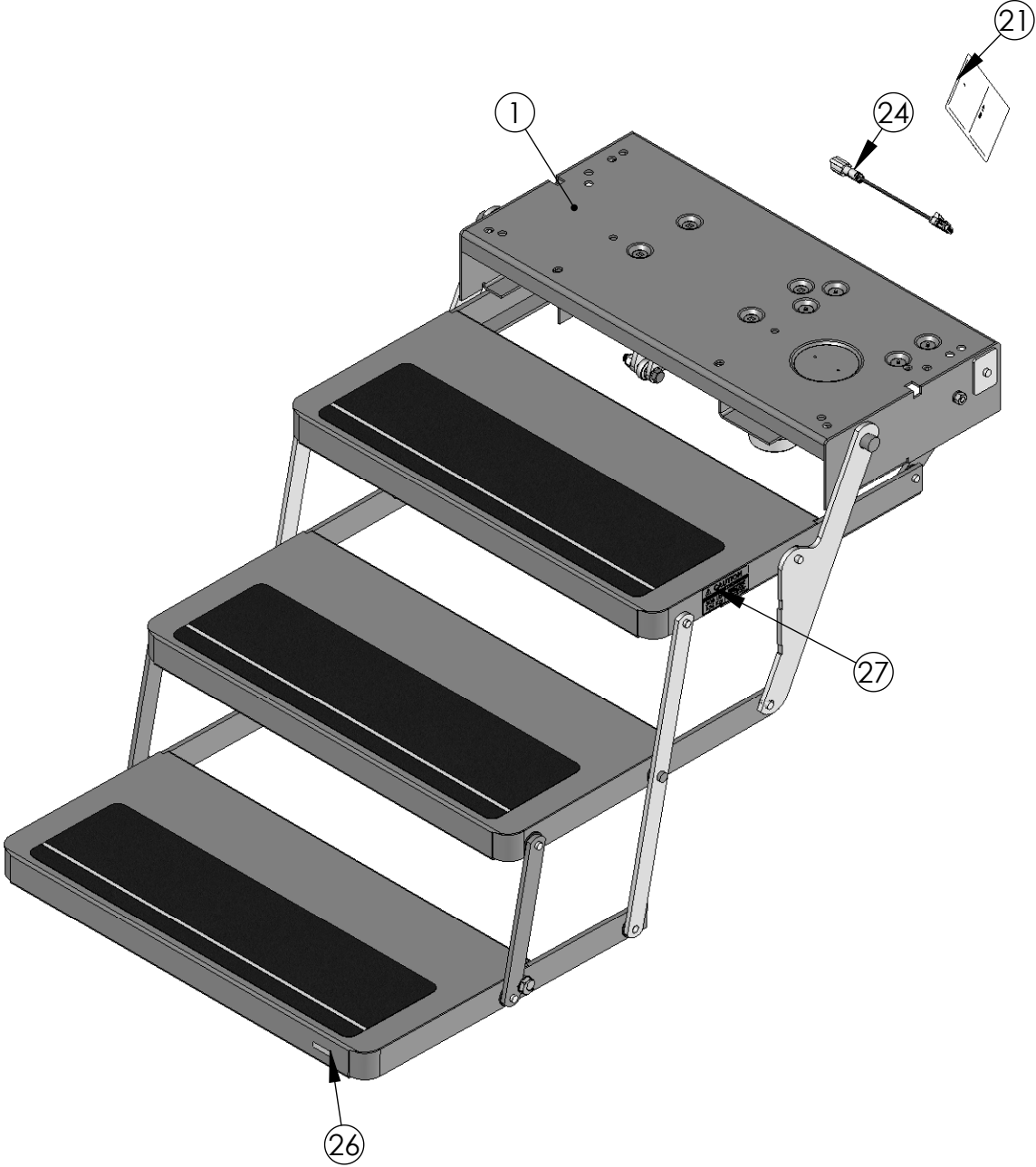
 OF

5


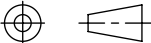


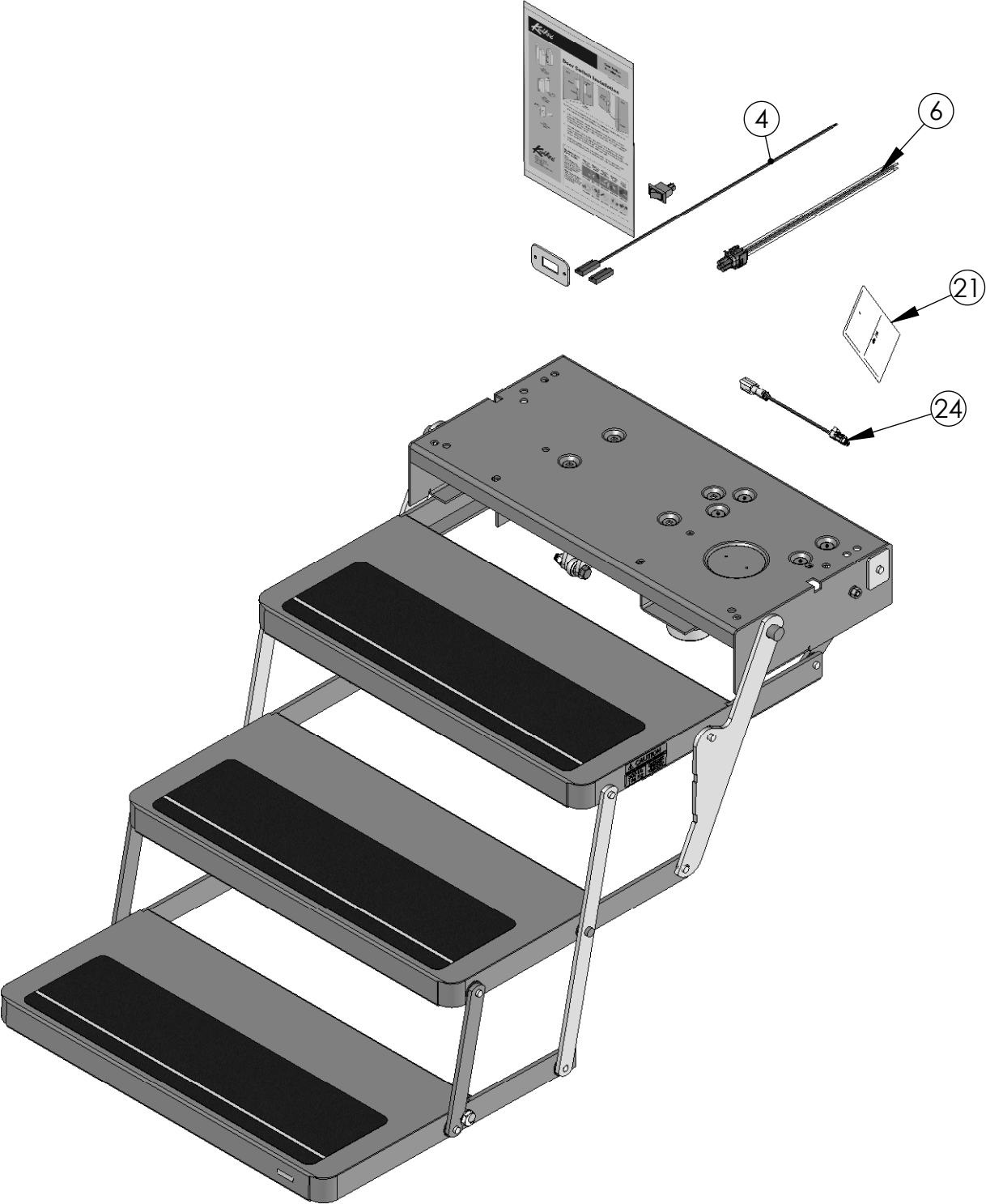
REFERENCE NUMBER:	PG 902509000
MATERIAL TYPE:	
SURFACE QUALITY:	
DECIMAL:	
FINISH GOOD WEIGHT:	78.817
BLANK WEIGHT:	
BLANK SIZE:	

TITLE:		STEP 25 TRIPLE 24" ELEC W/ 9510													
<div>UNLESS OTHERWISE SPECIFIED</div> <div>1. ALL DIMENSIONS ARE IN INCHES BREAK SHARP EDGES & DEBURR</div> <div>2. MATERIAL & FINISH TO BE AS NOTED OR SUBSTITUTED WITH AN APPROVED AND TESTED EQUIVALENT</div>		TOLERANCES (EXCEPT AS NOTED)		<div></div> <div>LIPPERT COMPONENTS™</div>		THE INFORMATION CONTAINED IN THIS DRAWING IS THE SOLE PROPERTY OF LIPPERT COMPONENTS, INC. ANY REPRODUCTION IN PART OR AS A WHOLE WITHOUT THE WRITTEN PERMISSION OF LIPPERT COMPONENTS, INC. IS PROHIBITED.									
						DWG. NO. 3658371		SIZE B	DATE: 1/12/2015			REV. R			
		SCALE: 1:12													
		FILLETS R.015				FINISH 125/✓		FRACTIONAL ±1/16		DRAWN BY MTH		CHECKED BY MTH		APPROVED BY	
THIRD ANGLE PROJECTION 		ANGULAR ±1°													


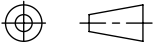


REFERENCE NUMBER:	PG 902509025
MATERIAL TYPE:	
SURFACE QUALITY:	
DECIMAL:	
FINISH GOOD WEIGHT:	79.676
BLANK WEIGHT:	
BLANK SIZE:	

TITLE:		STEP 25 TRIPLE 24" ELEC W/ 9510													
<div>UNLESS OTHERWISE SPECIFIED</div> <div>1. ALL DIMENSIONS ARE IN INCHES BREAK SHARP EDGES & DEBURR</div> <div>2. MATERIAL & FINISH TO BE AS NOTED OR SUBSTITUTED WITH AN APPROVED AND TESTED EQUIVALENT</div>		TOLERANCES (EXCEPT AS NOTED)		<div></div> <div>LIPPERT COMPONENTS™</div>		THE INFORMATION CONTAINED IN THIS DRAWING IS THE SOLE PROPERTY OF LIPPERT COMPONENTS, INC. ANY REPRODUCTION IN PART OR AS A WHOLE WITHOUT THE WRITTEN PERMISSION OF LIPPERT COMPONENTS, INC. IS PROHIBITED.									
						DWG. NO. 3658372		SIZE B	DATE: 1/12/2015				REV. R		
		SCALE: 1:12													
		FILLETS R.015				FINISH 125/√		FRACTIONAL ±1/16		DRAWN BY MTH		CHECKED BY MTH		APPROVED BY	
THIRD ANGLE PROJECTION 		ANGULAR ±1°													

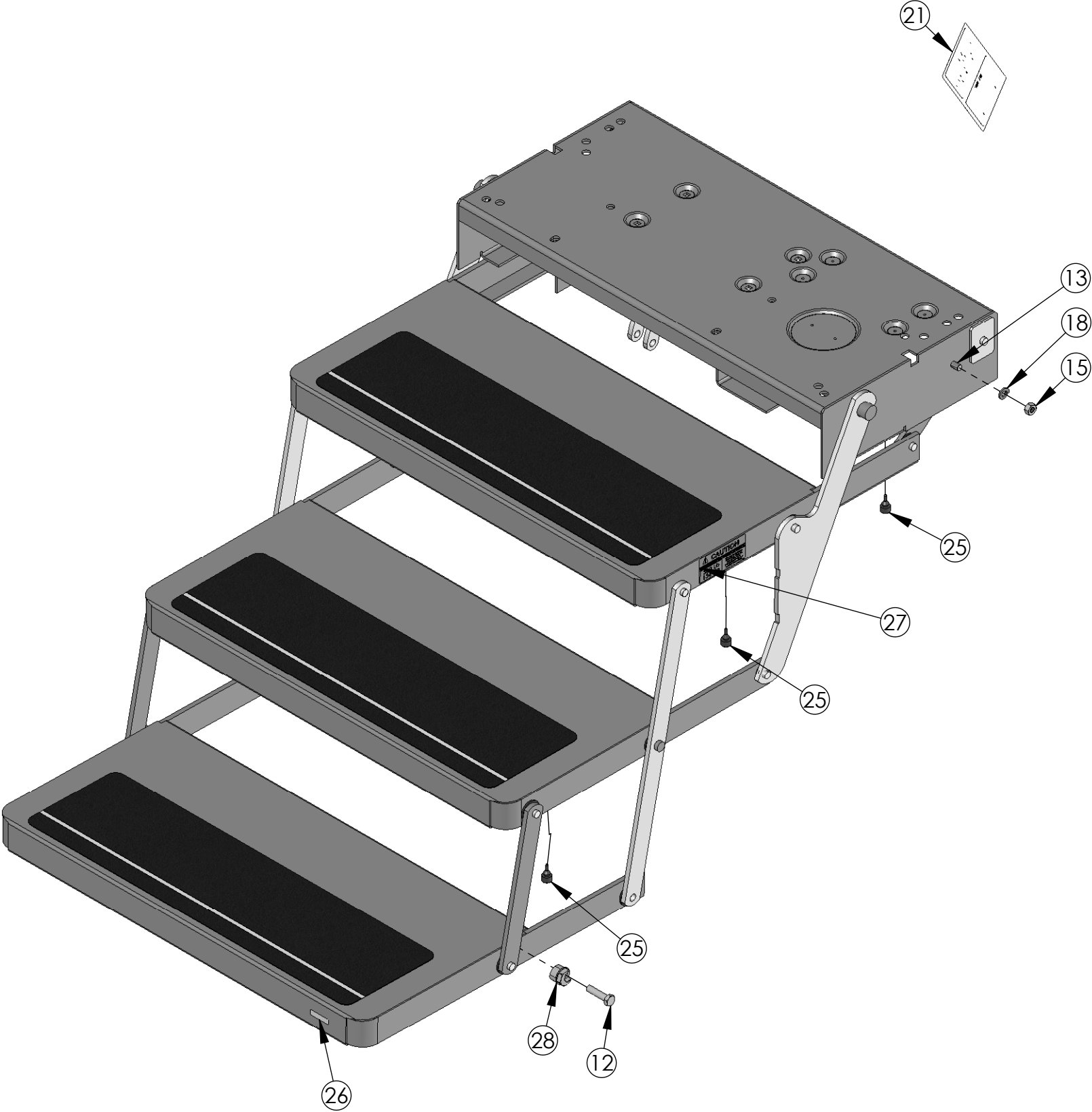


REFERENCE NUMBER:	PG 902509025
MATERIAL TYPE:	
SURFACE QUALITY:	
DECIMAL:	
FINISH GOOD WEIGHT:	79.827
BLANK WEIGHT:	
BLANK SIZE:	



TITLE:		STEP 25 TRIPLE 24" ELEC W/ 9510													
<div>UNLESS OTHERWISE SPECIFIED</div> <div>1. ALL DIMENSIONS ARE IN INCHES BREAK SHARP EDGES & DEBURR</div> <div>2. MATERIAL & FINISH TO BE AS NOTED OR SUBSTITUTED WITH AN APPROVED AND TESTED EQUIVALENT</div>		TOLERANCES (EXCEPT AS NOTED)		<div></div> <div>LIPPERT COMPONENTS™</div>		THE INFORMATION CONTAINED IN THIS DRAWING IS THE SOLE PROPERTY OF LIPPERT COMPONENTS, INC. ANY REPRODUCTION IN PART OR AS A WHOLE WITHOUT THE WRITTEN PERMISSION OF LIPPERT COMPONENTS, INC. IS PROHIBITED.									
						DWG. NO. 3658373		SIZE B	DATE: 1/12/2015		REV. R				
		SCALE: 1:12													
		FILLETS R.015				FINISH 125/√		THIRD ANGLE PROJECTION 		DRAWN BY MTH		CHECKED BY MTH		APPROVED BY	
		DECIMAL .X ±.1 .XX ±.010 .XXX ±.005		FRACTIONAL ±1/16		ANGULAR ±1°									

NOTES:

1. SERVICE PART NUMBER (908Q25000)



REFERENCE NUMBER:	PG 902509000
MATERIAL TYPE:	
SURFACE QUALITY:	
DECIMAL:	
FINISH GOOD WEIGHT:	70.536
BLANK WEIGHT:	
BLANK SIZE:	

TITLE:		STEP 25 TRIPLE 24" ELEC W/ 9510													
<div>UNLESS OTHERWISE SPECIFIED</div> <div>1. ALL DIMENSIONS ARE IN INCHES BREAK SHARP EDGES & DEBURR</div> <div>2. MATERIAL & FINISH TO BE AS NOTED OR SUBSTITUTED WITH AN APPROVED AND TESTED EQUIVALENT</div>		TOLERANCES (EXCEPT AS NOTED)		<div></div> <div>LIPPERT COMPONENTS™</div>		THE INFORMATION CONTAINED IN THIS DRAWING IS THE SOLE PROPERTY OF LIPPERT COMPONENTS, INC. ANY REPRODUCTION IN PART OR AS A WHOLE WITHOUT THE WRITTEN PERMISSION OF LIPPERT COMPONENTS, INC. IS PROHIBITED.									
						DWG. NO. 3658374		SIZE B	DATE: 1/12/2015		REV. R				
		SCALE: 1:6													
		FILLETS R.015				FINISH 125√		THIRD ANGLE PROJECTION 		DRAWN BY MTH		CHECKED BY MTH		APPROVED BY	
		DECIMAL .X ±.1 .XX ±.010 .XXX ±.005													
		FRACTIONAL ±1/16													
		ANGULAR ±1°													